

DATE: April 30, 2026

TO: Emily Brickman, P.G., *Senior Project Manager – Geologist, EnSafe*

FROM: Zach White, Project Manager *Harbor*

RE: Bi-weekly Site Inspection #1
NABORS Landfill
Mountain Home, AR
Harbor Project No: L8257760

Harbor conducted the bi-weekly site visit at the NABORS landfill in Mountain Home, Arkansas on April 17, 2026, to assess the general condition of the landfill and the leachate collection system (LCS).

Landmarc Environmental (Landmarc), a company specializing in LCS installation and service, conducted a full assessment of the LCS on December 3-4, 2024. A report summarizing these activities was submitted on January 20, 2025. EnSafe submitted a Scope of Services and Fee Estimate (Revision 1) to the Arkansas Department of Energy and Environment - Division of Environmental Quality (DEQ) Office of Land Resources on February 28, 2025, which included proposals from Harbor and Landmarc to complete repairs to the LCS. On July 10, 2025, the DEQ approved EnSafe's Scope of Services and Fee Estimate for LCS repairs, which were conducted on September 2-5, 2025. The LCS system was partially repaired, which included installation of 30-amp power disconnects and new PD6000 controllers. Harbor received a report from Landmarc on October 13, 2025, which was included with a report summarizing repairs prepared by Harbor and submitted on October 24, 2025. In February 2026, EnSafe and Harbor submitted two different proposals to DEQ for approval: Leachate Collection Systems Repairs – Operation and Maintenance NABORS Landfill – 2026, and Operation and Maintenance NABORS Landfill – 2026.

EnSafe and Harbor are currently awaiting approval of the Leachate Collection System Repairs scope of services submitted in February 2026. DEQ approved the 2026 O&M scope of work on 4/9/2026.

Findings and observations from the current landfill inspection are summarized below:

- Vertical leachate collection sump (VLCS)-1 was not functioning correctly, and the sump was observed at 1/2 capacity (see photograph 1).
 - VLCS-2 appeared to be functioning correctly and was observed at 1/2 capacity.
 - The leachate tank battery level was 22.4 inches.
 - Minimal stormwater was observed in the leachate tank containment. As such, no stormwater was released from the containment (see photograph 2).
-

- LCS-1 displayed a leachate level of 73.7 inches. The sump did not activate in either “hand” or “auto” and appears to not be functioning correctly.
- LCS-2 displayed a leachate level of 123.2 inches. The sump appeared to activate in both hand and auto, and a strong burning smell was emitted from the control panel.
- LCS-3 was non-operational.
- LCS-4 displayed a leachate level of 18.1 inches. The station appeared to be operating in both “hand” and “auto” modes.
- LCS-5 displayed a leachate level of 659.1 inches. Landmarc stated that the sump pump is more than likely faulty, causing voltage issues within the VFD. The station is not functioning correctly and will need additional repairs.
- LCS-6 was non-operational.
- LCS-7 displayed a leachate level of 300.3 inches. The sump did not activate in either “hand” or “auto” and appears to not be functioning correctly.
- LCS-8 and LCS-9 remain non-operational. Landmarc has submitted a proposal to complete repairs.
- An erosional washout is present along the road between LCS-4 and LCS-5.
- One damaged pressure relief vent (PRV-1) was observed on the west side of Area 1-2, between LCS-1 and LCS-2. The damage is located near coordinates 36.46144, -92.45128.
- Damaged closure turf is observed in several areas of Area 1-2, and in Area 1-3. Damage was first observed on July 2, 2025 and additional damage was noted until inspections ceased in February 2026. No repairs to the closure turf have been performed since inspections ceased in February 2026.
 - Additional Damaged noted prior to inspections ceasing includes:
 - An approximately 30-ft by 3-ft rip first observed July 2, 2025 on the north side of Area 1-2. Additional cracking developed from this segment for approximately 20 feet.
 - Patches in the turf in Area 1-2 have failed or are beginning to fail.
 - Two sections of damaged turf was first observed on January 26, 2026, both located on the south side of Area 1-2 above LCS-2.
 - An approximately 100-ft by 9-ft tear first observed June 17, 2025 on the east side of Area 1-3.
- Household debris was dumped near the leachate collection tanks in January of 2026. The trash has since be removed by DEQ.

Attachment A is a map showing the LCS points. Photographs are included in Attachment B. Copies of the field notes and the LCS status form are included in Attachment C.

The LCS functionality has improved significantly since Landmarc made repairs. 417 Services began hauling leachate on July 2, 2024. From July 2, 2024, through February 23, 2025, 226 loads of

leachate (866,700 gallons) were hauled to the City of Springfield, Missouri wastewater treatment plant under wastewater contribution permit #593.

No leachate was hauled between February 24, 2025, and April 10, 2025. 417 Services resumed hauling leachate between April 11, 2025 and October 17, 2025, and 180 loads of leachate (693,000 gallons) were hauled to the City of Springfield for disposal. Leachate hauling paused on October 17, 2025 and resumed February 11, 2026. An additional 45 loads (173,250 gallons) have been hauled by 417 Services as of March 31, 2026.

Attachments:

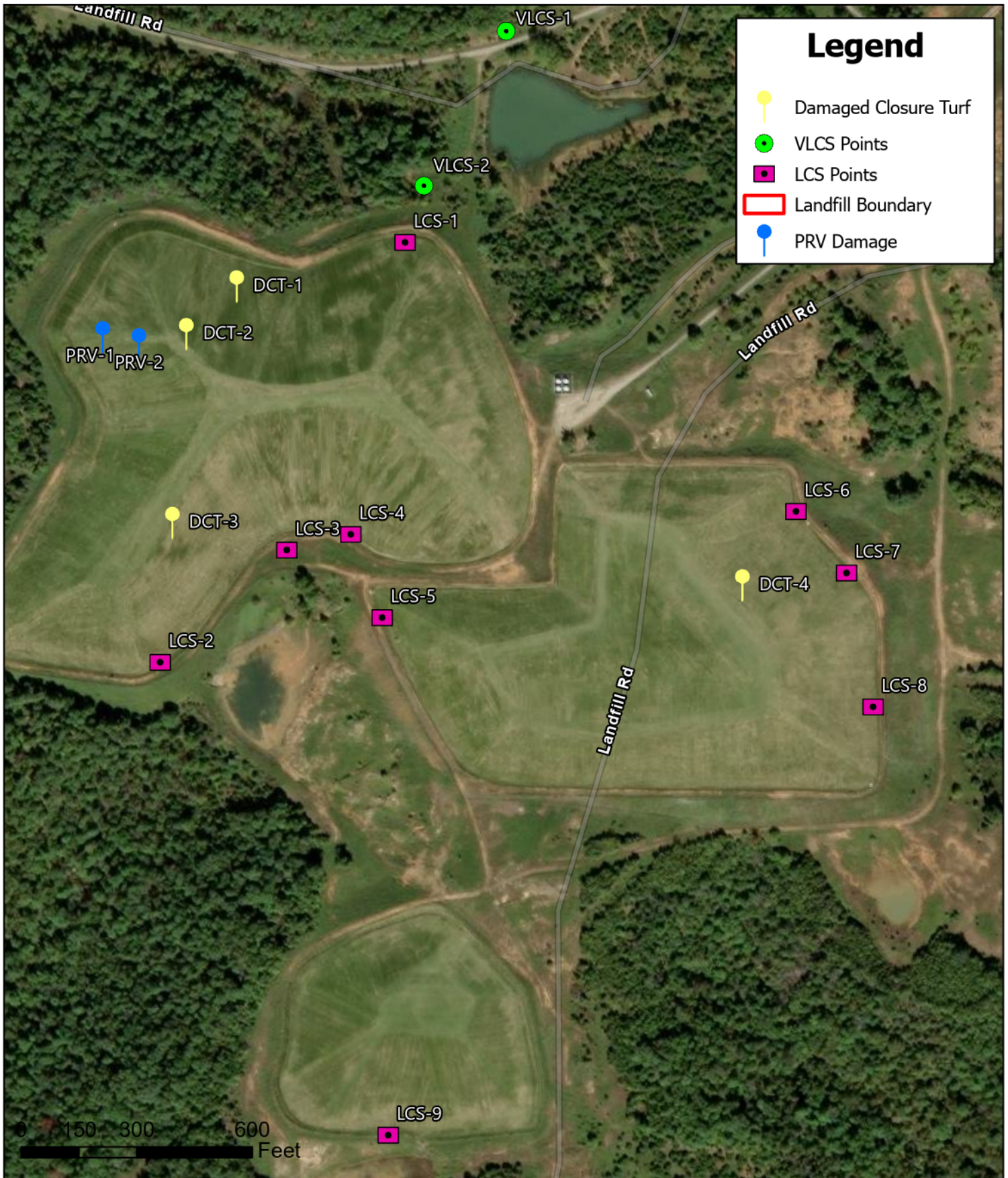
Attachment A – Site Map

Attachment B – Site Photographs

Attachment C – Field Notes and Leachate Collection System Status Form

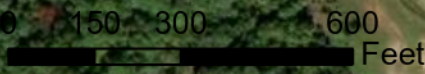
Attachment A

Site Map



Legend

- Damaged Closure Turf
- VLCS Points
- LCS Points
- Landfill Boundary
- PRV Damage



Harbor
 A Terracon Company
 5800 Evergreen Drive
 Little Rock, AR 72205
 P: 501.663.8800
 www.HarborEnv.com

Client:
ENSAFE



Site Location Map
 NABORS Landfill
 Three Brothers, Baxter County, AR
 Date: 1/26/2026
 Drawn by: CG
 Checked by: TH
 Revision No: 0

Attachment B
Site Photographs



Photograph 1: View of VLCS-1. Staining from past overflows is visible on the lid.



Photograph 2: View of minimal stormwater in leachate tank containment.



Photograph 3: View of DCT-1 on north side of Area 1-2, at 36.46181, -92.45045.



Photograph 4: View of south side of Area 4, above LCS-9 showing sagging closure turf.



Photograph 5: View of south side of Area 1-3, near LCS-7 showing damaged closure turf that has migrated to the ditch at the bottom of the slope.



Photograph 6: View of west side of Area 1-2, between LCS-1 and LCS-2 showing damaged gas vent.



Photograph 7: The signage at the entrance gate has been removed.

Attachment C

Field Notes and Leachate Collection System Status Inspection Form



Leachate Collection System Status

Date: 4/17/24 Arrival Time: 1200 Location: NABORS Landfill Leachate Tank Battery Level (inches): 22.4
 Weather Conditions: Sunny 81°

Panel Number	Display Functioning (Yes/No)	Leachate Level (inches)	Green Flashing? (Yes/No)	Amber Flashing? (Yes/No)	Red Flashing? (Yes/No)	Working in Hand? (Yes/No)	Working in Auto? (Yes/No)	VFD Status	Hours	Alarm	Comments
VLCS-1	N/A	N/A	N/A	N/A	N	N	N	N/A	N/A	N/A	Sump status: ~50% capacity
VLCS-2	N/A	N/A	N/A	N/A	N	Y	Y	N/A	N/A	N/A	Sump status: ~50% capacity
LCS-1	Y	73.7	N	N	N	N	N	N	N/A	N/A	
LCS-2	Y	123.2	N	N	N	Y	Y	Y	N/A	N/A	Burning smell from box
LCS-3	N	N	N	N	N	N	N	N	N/A	N/A	NO power
LCS-4	Y	18.1	N	N	N	Y	Y	Y	N/A	N/A	
LCS-5	Y	659.1	N	N	N	N	N	N	N/A	N/A	Switch was in hand upon arrival, left in off position
LCS-6	N	N	N	N	N	N	N	N	N/A	N/A	NO power
LCS-7	Y	300.3	N	N	N	N	N	N	N/A	N/A	Switch was in hand upon arrival, left in off
LCS-8	Y	651.0	N	N	N	N	N	N	N/A	N/A	Switch was in hand upon arrival, left in off
LCS-9	N	N	N	N	N	N	N	N	N/A	N/A	NO power

General Comments: vast majority of pumps do not function, no new tears in geofabric obvious. Gas vent broken between LCS-1 + LCS-2

End of Report
